

TERRI 3HW
Wheeled harvester

TERRI
FOREST MACHINES



TERRI 3HW

Wheeled harvester

Flexibility is fundamental when it comes to stand-operative thinning. So we want to make the case for Terri 3HW. The ultimate forestry machine that performs best even in the most challenging conditions. An elite level of cabin comfort, high ground clearance and world-class traction and bearing capacity are just some of the benefits of this fearless and powerful workhorse.

Focus on driver comfort

Whatever the terrain and surface, the harvest can put you as a driver to the test. Our ambition is to make your work a comfortable delight. That is why our cabin comfort is top of the class in many ways and can be compared with that of large forestry machines.

We place great emphasis on an optimal working environment in all our machines. The cabins are airy, spacious and equipped with technology and amenities that make long working days both enjoyable and smooth. All equipment has been

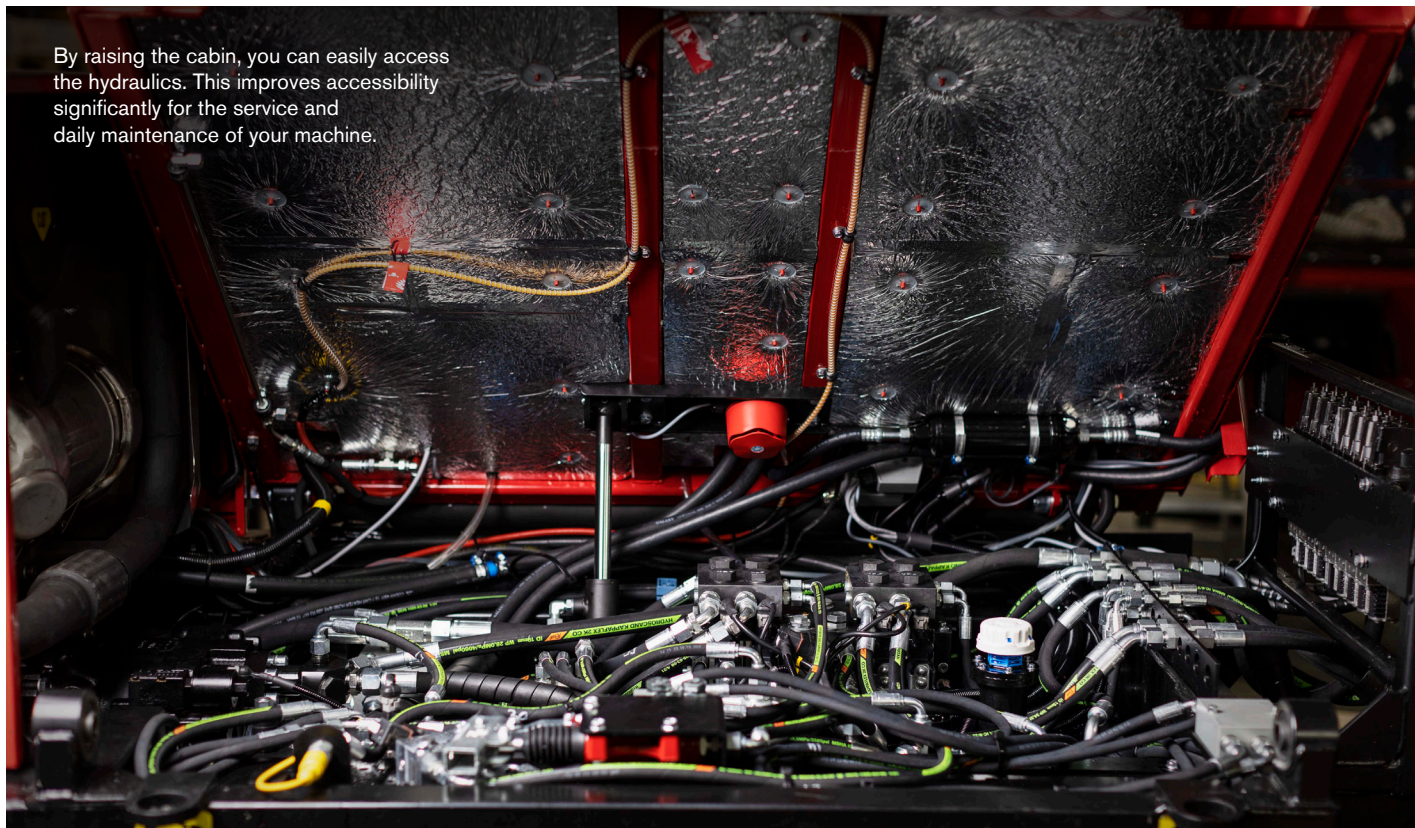
sketched and studied down to the smallest detail. The chair is ergonomically designed, and as a driver you have a perfect overview of the working area thanks to large wrap-around windscreens.

The climate control system is fully automatic and guarantees comfortable air circulation and temperature regardless of what the mercury is showing outside. What is more, the lighting is intelligently placed, guaranteeing the same quality felling regardless of the time of day – all year round.

The ground clearance is an incredible 70 centimetres, providing fantastic surface negotiability even over rocky or hilly terrain. Thanks to the eight wheels, all of which are drive wheels, a high degree of ground contact is also ensured, which optimises traction and driver comfort. Because the cabin rests on pairs of double wheels, this also means a less bumpy and rough driving experience.

And of course, you can fit tracks and chains to the wheel pairs.

By raising the cabin, you can easily access the hydraulics. This improves accessibility significantly for the service and daily maintenance of your machine.



Fantastic ground clearance

Did you know that the ground clearance is at the same level as in larger forest machine models? Everyday work is made considerably easier thanks to the 70-centimetre clearance. You can now venture without a second thought into tougher terrain without it affecting your work.

Fully automatic optimal traction

Terri Automatic Wheel System (AWS) has replaced the old differential lock as standard. This gives you a fully automatic solution where the machine itself detects when the system should be active or not in order to ensure optimal traction.

Terri AWS is our own innovation. Something we are more than happy to beat our drum about. Compared with the previous technology, this means that power is used when and where it is most needed. Both traction and power are guaranteed to generate more and the right amount of power to each wheel without you

as a driver needing to do anything. The difference becomes noticeably clear on steep terrain or on ground with poor bearing capacity.

And there are many benefits. Also worth mentioning is the smoother and more comfortable driving, and fuel consumption is also reduced.

Manages all kinds of terrain

Terri 3HW is not just powerful and robust. It is also easy to drive and can easily tackle terrain that many other forestry machines cannot manage.

It does this thanks to its low ground pressure, making it an ideal thinning partner, even on sensitive ground.

24-volt electrical system

As one of the few manufacturers in this machine class, we have designed Terri 3HW with a 24-volt electrical system. That is actually not so unusual – we are just following the industry standard – but the benefits for you are huge.

When the machine is in operation and the electrical system requires high power, you therefore get a more stable and secure power supply.

It is also less sensitive to power surges. We are also throwing into the bargain the fact that it is easier to start.

Smart service solutions

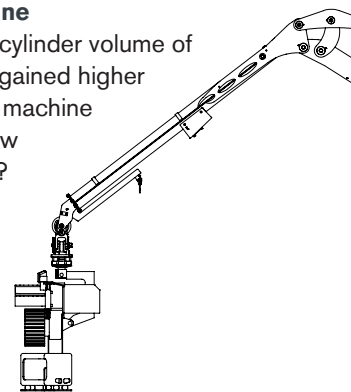
With a Terri 3HW you save time on daily maintenance and regular service. This is due to a number of smart solutions that make it extremely easy to access the engine compartment. And if you just need to check the engine oil, you can do so without having to open the bonnet.

Fuel-efficient engine

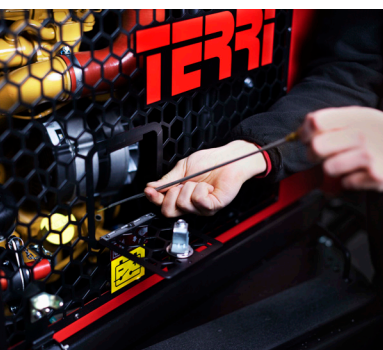
With an increased cylinder volume of 3.6 litres, we have gained higher torque, making the machine powerful even at low speeds. The result?

An engine that is more fuel-efficient and powerful than its predecessors.

The engine is designed based on the conditions and requirements that pertain to a forestry machine.

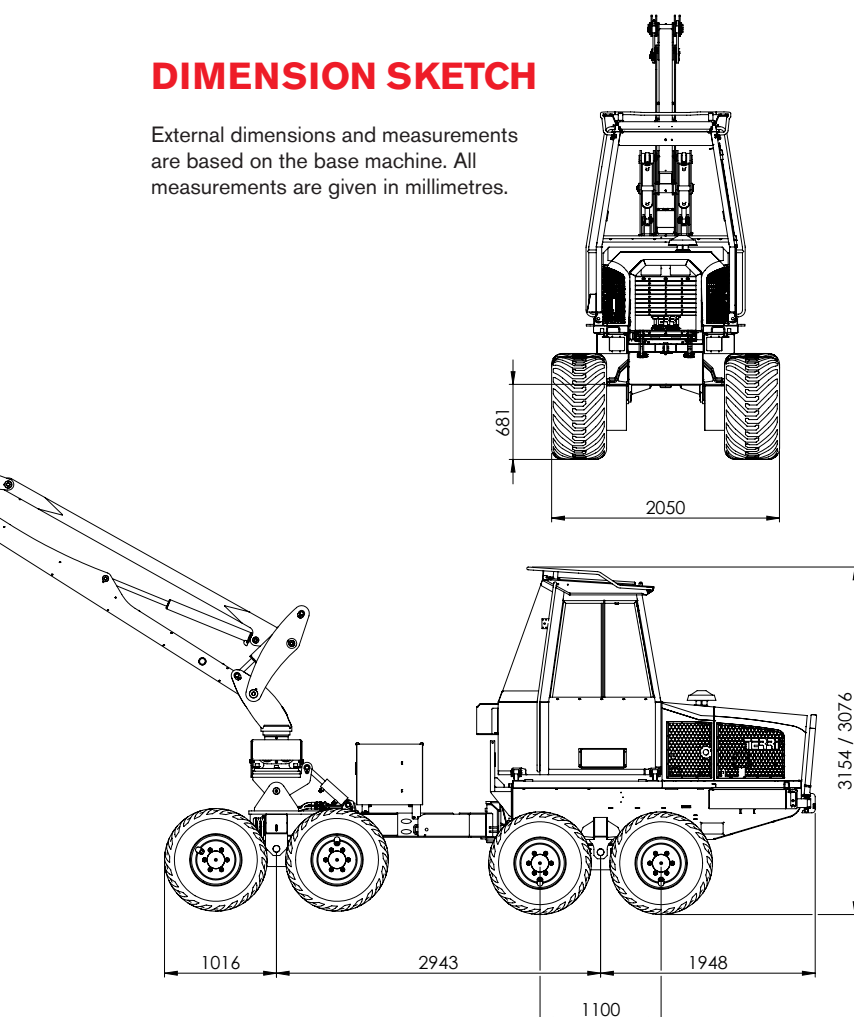


TERRI
AWS | AUTOMATIC
WHEEL
SYSTEM



DIMENSION SKETCH

External dimensions and measurements are based on the base machine. All measurements are given in millimetres.



TECHNICAL DATA

Diesel engine	CAT 3.6
Power	55.4 kW
Number of cylinders	4
Torque	424 Nm/1,200 rpm
Diesel tank volume	100 l
Transmission	Fully hydraulic
Max. steering angle	45°
Gears	1, 2, 3 and reverse
Max. speed	18 km/h
Wheel dimension	500/50 x 17
Hydraulic system	Danfoss
Tank volume	120 l
Pump capacity	115 cc
Electrical system	24 V
Battery	2x12 V/100 Ah
Generator	100 A
Crane	Mowi
Model	P40T/P61T
Lifting torque	37 kNm/52 kNm
Slewing torque	12 kNm / 15 kNm
Slewing arc	260°
Reach	7.5 m
Lifting capacity at max. reach	340 kg / 550 kg
Harvester head	Log Max
Model	LM 2000T
Feed rate	3.1/4.0 m/sec
Feed force	14.9 kN
Number of feed wheels	2
Max. opening	330 mm
Chassis	
Service weight	7,500 kg
Length, standard	5,900 mm
Width	2,050 mm
Highest height	3,100/3,180 mm
Ground clearance	700 mm

Terri reserves the right to make technical changes.



WE MANUFACTURE FOR SUSTAINABLE FORESTRY

Thanks to its low ground pressure, Terri 3HW causes minimal ground damage because the machine weight with a full load is distributed over eight wheels. If you want to strengthen the traction and reduce the ground pressure further, the machine can be supplemented with tracks or chains.

As a manufacturer of modern forestry machines, impact on nature is important to us. We play a decisive role that includes great responsibility for the future and sustainable forestry.

That is why we develop our machines based on three basic requirements: gentleness to nature, comfortable workplaces and the right properties

for efficient and smart forestry work. By choosing a Terri 3HW, you get a harvester that you can really rely on. The work is performed efficiently, rationally and always with great respect for the forest, land and nature.

Welcome to the Terri family!



YOUR MACHINE - YOUR WISHES

When buying a Terri, you have many options for putting your own stamp on the machine. Among these you will find a multitude of smart options that you can have fitted and installed. Read more in our catalogue at terri.se or contact our sellers for more information.

Terri develops and manufactures powerful machines for professional and sustainable forestry that are specially adapted for stand-operative thinning. The model programme is characterised by compact flexible machines with low ground pressure.

Terri AB is a part of the Inev Group with sales of SEK 1.3 billion. The machines are built in Älmhult, Småland. The group has its own development, design and manufacturing. Extensive knowledge and many years of experience within the Inev Group provide a solid foundation for our ongoing development work.